



AGROECOLOGY
FUND



Overview of Research Projects of the **IPA-Global** Initiative



Introduction

In 2024, [the Agroecology Fund](#) launched the [IPA-Global Initiative](#) (Investigación Acción Participativa en Agroecología, or Participatory Action Research on Agroecology) to advance agroecology as a climate solution. Through Participatory Action Research (PAR), the initiative aims to answer open questions and generate evidence to inform policy advocacy and practice. Supported by the Waverley Street Foundation, this initiative brings together 43 multi-stakeholder collaborations across 12 countries and one region (the European Union).

In November 2025, the Agroecology Fund held the first global in-person Convening on [Participatory Action Research for Agroecology and Climate Advocacy](#) in Guararema, São Paulo, Brazil. The gathering brought together 41 of the 43 collaboratives from the IPA-Global Initiative. During this event, members from grassroots organizations representing national networks, academic institutions, research centers, NGOs, farmers, Indigenous peoples, and fisheries organizations shared their PAR initiatives—presenting the scope of their work, exchanging experiences, and identifying common challenges and opportunities.

The convening brought together initiatives at different stages of implementation: some in their first year, still shaping their research, and others nearing completion. The posters featured in this document offer a snapshot in time—capturing the questions, approaches, and aspirations that are shaping both research and advocacy processes across regions. As these initiatives continue to evolve, they will generate deeper insights, practical evidence, and policy-relevant outcomes that extend far beyond what is presented here.

This compilation serves as both a knowledge resource and a practical tool for learning and collaboration. It is also intended to provide donors and stakeholders with a clear overview of the diverse PAR initiatives that make up the IPA-Global Initiative.

Contents

Africa	5
Ethiopia	5
• Lead organization: Ethiopian Sustainable Food Systems and Agroecology Consortium (ESFSAC).....	5
• Lead organization: Participatory Ecological Land Use Management (PELUM)	6
Kenya	7
• Lead organization: Biodiversity and Biosafety Association of Kenya (BIBA).....	7
• Lead organization: Slow Food Kenya.....	8
• Lead organization: Ogiek Peoples’ Development Program	9
Nigeria	10
• Lead organization: HOCK Collaborative.....	10
Regional	11
• Lead organization: Alliance for Food Sovereignty in Africa (AFSA).....	11
South Africa	12
• Lead organization: Biowatch South Africa	12
• Lead organization: Masifundise Development Trust.....	13
Americas	14
Argentina	14
• Lead organization: Fundación Ambiente y Recursos Naturales (FARN).....	14
• Lead organization: Red Nacional de Municipios y Comunidades que Fomentan la Agroecología (RENAMA)	15
• Lead organization: Mesa Agroalimentaria Argentina (MAA).....	16
Brazil	17
• Lead organization: Articulação Semiárido Brasileiro (ASA)/Associação Programa Um Milhão de Cisternas para o Semiárido - APIMC.....	17
• Lead organization: Centro de Desenvolvimento Agroecológico do Cerrado (CEDAC).....	18
• Lead organization: Serviço de Assessoria a Organizações Populares Rurais (SASOP)	19
• Lead organization: Articulação Nacional de Agroecologia (ANA).....	20
• Lead organization: La Via Campesina Brasil (LVC Brasil)	21
Colombia	22
• Lead organization: Corporación de Estudios, Educación e Investigación Ambiental (CEAM)	22
• Lead organization: FIAN Colombia.....	23
• Lead organization: Grupo de Investigación en Agroecología de la Universidad Nacional de Colombia – Sede Palmira (GIAUN)	24
• Lead organization: Corporación Grupo Semillas	25

Mexico	26
• Lead organization: Asamblea de Pueblos Indígenas por la Soberanía Alimentaria APISA A.C.....	26
• Lead organization: Asociación Nacional de Empresas Comercializadoras del Campo (ANEC).....	27
• Lead organization: Universidad Autónoma de Yucatán.....	28
• Lead organization: Instituto Agroecológico Latinoamericano - México (IALA México).....	29
• Lead organization: Xilotl Asociación para el Desarrollo Social A.C.....	30
United States	31
• Lead organization: Instituto para la Agroecología, Investigación y Acción (IALA-PR).....	31
• Lead organization: Native American Food Sovereignty Alliance (NAFSA).....	32
• Lead organization: Institute for Agriculture and Trade Policy (IATP) & MinneAg Network Collaborative.....	33
• Lead organization: Southern Black Farmers Community Led Fund (SBFCLF).....	34
• Lead organization: National Family Farm Coalition (NFFC).....	35
• Lead organization: Pesticide Action Network North America (PAN).....	36
Asia	37
India	37
• Lead organization: Centre for Sustainable Agriculture (CSA).....	37
• Lead organization: National Coalition for Natural Farming (NCNF).....	38
• Lead organization: NIRMAAN Organization.....	39
• Lead organization: Preservation and Proliferation of Rural Resources and Nature (PRAN).....	40
Indonesia	41
• Lead organization: Serikat Petani Indonesia (SPI).....	41
• Lead organization: Papua Democratic Institute (PD-Institute), former KKDP.....	42
• Lead organization: The People’s Coalition for Fisheries Justice (Koalisi Rakyat Untuk Keadilan Perikanan) (KIARA).....	43
• Lead organization: Komite Nasional Serikat Perempuan Indonesia (SERUNI).....	44
Regional	45
• Lead organization: Focus on the Global South.....	45
Europe	46
France	46
• Lead organization: Confédération Paysanne.....	46
Regional	47
• Lead organization: European Coordination Via Campesina (ECVC).....	47



Ethiopia

Lead organization: Ethiopian Sustainable Food Systems and Agroecology Consortium (ESFSAC)

Collaborative Research and Advocacy to Advance Agroecology-Based and Climate-Resilient Food Systems Transformation

Objectives

- Identify challenges and barriers related to the climate policy landscape that would enable or challenge adoption of a resilient food system.
- Describe and map out relevant stakeholders in the country's climate, agriculture, and food systems.
- Conduct case study research to understand and document the interlink between climate change impacts on agriculture and the food system.
- Promote public awareness campaigns through media and events using different promotional materials.
- Develop policy briefs and influence high-level decision makers to support the development of agroecology and food systems policies.



Research questions

- ✓ How do climate policies impact Ethiopian food systems?
- ✓ What are the best agroecological practices to scale?
- ✓ How can policy gaps be addressed to promote agroecology and climate justice?



Participatory methods

- PAR is engaging farmers and policymakers (connections with the Ministry of Agriculture, Parliament's House of People's Representatives).
- Documentation and dissemination of best practices – knowledge hub.
- Curriculum development for agroecology education.
- Policy landscape analysis and roadmap to inform advocacy strategies.

Desired changes

- ✓ Advocacy at governmental and non-governmental levels to integrate agroecology into national climate and food policies.
- ✓ Strengthen smallholder farmers' rights and access to sustainable practices.
- ✓ Enhance agroecology education at the university level and popularize the concept of AE in the media and among communities.

Members of the partnership

- CCC-E
- Haramaya University
- Farmer communities

Ethiopia

Lead organization: Participatory Ecological Land Use Management (PELUM)

Evidence-based Scaling Up of Agroecology Practices Through Networking and Inclusive Farmer-led Research for Climate Resilience Communities

Collaborative Members

- Ethiopian Biodiversity Institute (EBI)
- Sodo Catholic Secretariat
- Hawassa University
- Sidama Agriculture Research Institute
- Best Practice Association
- Aksum University
- Axum Agriculture Research Center
- Mekelle Biodiversity Institute
- Soil Resource Development Lead Executive of the Ministry of Agriculture

Research Questions

- ❓ What are the essential components of effective research protocols for participatory or farmer-led research activities in smallholder farming contexts?
- ❓ What specific agroecological practices and innovations, prioritized by smallholder farmers, have effectively enhanced resilience, particularly during war/conflict?
- ❓ What are the community-led strategies for controlling pests?
- ❓ How effectively are CLGs facilitating knowledge exchange and enhancing farmers' engagement in research practices?
- ❓ How do digital platforms enhance continuous learning and knowledge exchange between farmers and researchers?
- ❓ How effective is farmer-to-farmer extension in increasing the adoption of participatory innovation development practices across different geographical areas?
- ❓ In what ways can farmer-led research findings and the recognition of best practices be leveraged to influence agroecology policy development and promote wider adoption of these methods?

Kenya

Lead organization: Biodiversity and Biosafety Association of Kenya (BIBA)

Strengthening Climate Resilience by Scaling Up Agroecology. Collaborative Research and Advocacy to Advance Food Systems Transformation

Objectives

- | | |
|---|---|
| <ul style="list-style-type: none"> Development of national and local agroecology policy frameworks primarily in West Pokot and Makueni County. | <ul style="list-style-type: none"> Increased attention and recognition of agroecology in climate change discussions. |
| <ul style="list-style-type: none"> Increased adoption of agroecological practices in smallholder farmers' communities (including women and youth). | <ul style="list-style-type: none"> Stronger partnerships and collaborations at the national and county levels to increase awareness & public investment in agroecology training. |



Research questions

- What indigenous, traditional, and innovative practices are available locally as alternatives to agrochemicals?
- What are the potential trade-offs between scaling up agroecology and conventional systems regarding long-term climate resilience, food production, and socio-economic development?
- How can adopting agroecology strengthen farmers' ability to shift from fossil fuel-based inputs to more resilient practices?
- What are the barriers and enablers to scaling up agroecology within communities and existing policy frameworks at the local level, and how can advocacy efforts effectively address these factors?
- How can participatory evidence co-creation collaborate to have farmer-led innovations in agroecology inform national/local policies?

Participatory methods

- PAR with smallholder farmers & farmer training programs on pesticide-free alternatives.
- Engaging media and policymakers about the hazards of agrochemicals and possible AE alternatives.



Desired changes

- Agroecology Policy integration and implementation in national and county policies, to ensure the integration and effective implementation of agroecology and climate considerations.
- Community inclusion in decision making: empower local communities to actively participate in shaping agricultural and environmental policies through platforms for engagement, knowledge dissemination, and decision making concerning agroecology and climate resilience.
- Resilient food systems through influencing systemic changes that prioritize agroecological practices, biodiversity conservation, and climate resilience in Kenya. This will counter existing use of harmful agrochemicals that threaten safe food production, climate, and biodiversity not only in Kenya but globally.

Members of the partnership

- PELUM Kenya
- Effective IPM Association

Kenya

Lead organization: Slow Food Kenya

Farmer-Led Agroecology Research Hubs and Solidarity Schemes for Climate Resilience and Food System Transformation

Collaborative Members

- Slow Food Association Kenya (SFK)
- Egerton University
- Grow Biointensive Agriculture Centre of Kenya (G-BLACK)

Research Questions

- ① How do agroecological Soil Fertility practices improve yields and long-term soil health compared to conventional systems, and how can this evidence be used to advocate for policy support to scale these practices?
- ① How can agroecological solidarity schemes contribute to smallholder economic resilience and climate adaptation?
- ① What is crop diversification's nutritional and economic viability and integrating with neglected and underutilized species (NUS) into smallholder production systems?
- ① How can farmer-farmer, researcher-farmer, and consumer-farmer exchanges, including Indigenous knowledge, strengthen agroecological learning and advocacy, and how can these approaches ensure greater participation of women, youth, and Indigenous Peoples in shaping food and climate policies at the county and national levels?

Kenya

Lead organization: Ogiek Peoples' Development Program

Research and Advocacy to Advance Food Systems Transformation among Indigenous Hunter-Gatherer and Pastoralist Communities in Kenya.

Objectives

- Conduct collaborative research to document indigenous knowledge and traditional agroecological practices.
- Provide training and workshops on agroecology, sustainable land management, and climate-smart agriculture.
- Generate advocacy materials and engage with local, county, and national policymakers.
- Encourage cross-learning and collaboration to enhance understanding of agroecological principles and promote local leadership in sustainable agriculture.
- Establish monitoring mechanisms to track project progress, evaluate impact, and adjust strategies.



Research questions

- ✓ How can Indigenous knowledge systems support marginalized farmers' communities' resilience?
- ✓ What policy frameworks are needed/exist to protect Indigenous land rights for agroecology?
- ✓ What are the best agroecological and land management practices for Indigenous communities facing climate change?

Participatory methods

- Participatory research engaging indigenous farmers and policymakers.
- Documentation and dissemination of traditional agroecological practices.
- Community-led advocacy and policy dialogue.
- Training programs on sustainable land use and agroecology.



Desired changes

- ✓ Recognition of Indigenous land rights for implementing agroecological practices.
- ✓ Integration of Indigenous knowledge into national agroecology policies.
- ✓ Support for community-led conservation and sustainable agriculture initiatives.

Members of the partnership

- The Indigenous Movement for Peace Advancement and Conflict Transformation (IMPACT)
- Laikipia University
- Jomo Kenyatta University of Science and Technology

Nigeria

Lead organization: HOCK Collaborative

Strengthening Climate Resilience through Agroecology Research and Advocacy

Objectives

- A draft agroecology policy based on key findings from the Participatory Action Research.
- At least 100 farmers actively implementing learned agroecology methods by the end of the proposed project period.
- Two community-led demonstration farms set up and managed.
- A network of agroecology farmers set up with guiding principles and a platform for information exchange.
- Reduced dependency on external synthetics and other artificial food preservatives.



Research questions

- ✓ What are the economic and social benefits of agroecology?
- ✓ What are the key barriers to adoption of agroecology?
- ✓ What policy changes are needed to support the widespread adoption of agroecology?

Participatory methods

- Documentation and dissemination of best agroecological practices & PAR engaging smallholder farmers.
- Community-based agroecology training and three demonstration farms on indigenous lands.
- Advocacy campaigns targeting policy makers – draft brief and direct visits to decision makers at the House of Representatives Committee on Agriculture.
- Co-creation of strategies for policy advocacy and reform, ensuring that local governance aligns with and promotes sustainable agroecological practices.



Desired changes

- ✓ Recognition and integration of agroecology into national agricultural and climate adaptation policies.
- ✓ Reduction of chemical input dependency in agriculture (vs GMOs & pesticides).
- ✓ Strengthen farmer networks for knowledge exchange and advocacy.

Members of the partnership

- Corporate Accountability and Public Participation Africa (CAPPA)
- Kebetkache Women Development & Resource Centre
- Alliance for Action on Pesticides in Nigeria (AAPN)
- The GMO-Free Nigeria Alliance
- Be the Help Foundation
- Local Communities

Regional

Lead organization: Alliance for Food Sovereignty in Africa (AFSA)

Connecting Young Agroecologists and Climate Advocates for Transformative Food Systems

Objectives

- | | |
|--|---|
| <ul style="list-style-type: none"> To inform activism towards policy change for sustainable food systems transformation. | <ul style="list-style-type: none"> To facilitate the involvement of youth activists and young agroecology entrepreneurs in environmental governance. |
| <ul style="list-style-type: none"> A collaborative initiative is needed to foster networking among youth groups and other actors involved in climate and agroecology. | <ul style="list-style-type: none"> To popularise and garner youth and public support for an adoption of agroecology as an approach towards combating the impacts of climate change and towards sustainable food systems. |



Research questions

- ✓ What are the barriers and opportunities for youth participation in agroecology, food systems, and climate policy advocacy and narratives?
- ✓ How can youth be supported in leadership roles within agroecology and climate movements, and how can they connect both movements?



Participatory methods

- PAR engages youth in agroecology and climate change movements.
- Co-creation of solutions, documentation of discussions, and scaling-up of best practices.
- Youth-led community engagement programs and agroecology education.

Desired changes

- ✓ Strengthening youth involvement in agroecology and climate policy decision-making.
- ✓ Increased youth participation in AFSA's Agroecology for Climate Action campaign, aiming to integrate AE into national, regional, and global climate policies.
- ✓ Institutionalising agroecology education through university curricula and farmer

Members of the partnership

- JVE-International
- Schools and Colleges
Permaculture-Kenya
- Ecosteward and Humanitarian Foundation (EHF).
- Uganda Martyrs University- Nkozi

South Africa
Lead organization: Biowatch South Africa

Strengthening Climate Resilience by Scaling up Agroecology

Objectives

- Co-facilitated multi-actor dialogues on agroecology to develop an agroecology strategy building on the High Level Panel of Experts on Food Security and Nutrition (HLPE-FSN) 13 principles.
- Movement towards establishing a government-convened participatory, multi-actor forum for developing a national agroecology strategy.
- Consolidate a core group of civil society organisations to jointly promote and support agroecology initiatives nationally.
- Establish, consolidate, and strengthen provincial agroecology platforms in at least three provinces.
- Map agroecology nodes and local producer networks and strengthen their interactions.
- Facilitate farmer-to-farmer learning exchanges to strengthen agroecology conceptualization and practice.
- Design and implement a pilot project on farmer-based production and distribution of ecological inputs to a targeted 400 farmers.



Research questions

- ✓ What is needed (content areas) and what exists (policies and plans) to build a comprehensive agroecology strategy in a participatory manner?
- ✓ What is the current situation regarding grassroots production networks and nodes?
- ✓ What does the input supply look like in South African provinces? How can the 2021 TCOE experience on farmer-based input production and distribution inform an agroecology farmer-produced input supply pilot?

Participatory methods

- Monitor the input supply pilot project and identify and share its lessons for wider practice.
- Community-based mapping of promising agroecology initiatives and support reinforcing networks.
- Local farmer exchanges.
- Establish provincial agroecology platforms.
- Informed and active farmer and community participation in developing and implementing agroecology strategies or plans in partnership with the government.

Desired changes

- ✓ Secure a National Agroecology Strategy, including the social justice component – by connecting with national government authorities.
- ✓ Integrate lessons from the input supply pilot project into national strategies and reallocations in the government's farm input supply programme (vouchers).



Members of the partnership

- Association for Rural Advancement (AFRA)
- Environmental Monitoring Group (EMG)
- Surplus People Project (SPP)
- Trust for Community Outreach and Education (TCOE)
- Ilizwi lamafama
- Mopani Farmers Association
- Sovereign Agroecology for Food Empowerment (SAFE)
- Rural Women's Assembly (RWA)
- Land Network National Engagement Strategy (LandNNES)
- Water Caucus

South Africa

Lead organization: Masifundise Development Trust

 Ukunakekela Imvelo
(Caring for the Environment)

Collaborative Members

- Masifundise
Rhodes University. Taryn Pereira
- The Transnational Institute
Helmholtz Institute for Functional Marine Biodiversity (HIFMB). Paula Satizábal
- Coastal Links

Research Questions

- ① What natural resource(s) are used in fishing? Which species (fish, shellfish, plants)?
- ① Where and how is fishing done? Fishing grounds, techniques, tools and infrastructure.
- ① Who does what in fishing? The role of women, men, youth, people of different races, and classes.
- ① Who gets what in fishing? From the different resources used.
- ① What do they do with it? Is it for cultural/customary practices, food, and income? Is it for local, national, or international markets/consumption?
- ① Who decides?
- ① What is the impact (on the environment and climate)?

Argentina**Lead organization: Fundación Ambiente y Recursos Naturales (FARN)****Agroecology for climate resilience in Biocultural Corridors in Entre Ríos, Santa Fe, and Buenos Aires, Argentina****Collaborative Members**

- Taller Ecologista [Ecological Workshop]
- Casa Rio Lab
- Fundación CAUCE: Cultura Ambiental, Causa Ecologista [CAUCE Foundation]

Research Questions

- ❓ What assessments have been carried out in the Central-Coastal region of Argentina on agri-food systems and climate change?
- ❓ What is the current situation of agroecological production in the focus area?
- ❓ What are the obstacles and opportunities that farmers in the Matanza-Riachuelo Basin, Anillo del Gran La Plata, Dos Orillas, and Arroyo Ludueña Biocultural Corridors identify in terms of production, trade, finance, and politics to sustain and improve their production? What other concerns and worries about agroecological production do they have?
- ❓ How do agroecological farmers in the Biocultural Corridors perceive the weather variations linked to climate change, and what impacts do they recognize in their production systems?
- ❓ What is the status of regulatory frameworks and policies on climate change and on supporting and promoting agroecology at municipal, provincial, and national levels, with impacts on the Biocultural Corridors, and what changes are needed to sustain and expand agroecology?



Argentina

Lead organization: Red Nacional de Municipios y Comunidades que Fomentan la Agroecología (RENAMA)

Agroecology and Resilience: RENAMA and participatory action research for scaling up agroecology in Argentina

Collaborative Members

- Elementales
- Ambientate Civil Association
- Sociedad Argentina e Agroecología (SAAE) [Argentine Society of Agroecology]

Research Questions

- ❓ How can participatory action research with territorial and institutional actors contribute to identifying and overcoming knowledge gaps about factors that enable or hinder the scaling up of agroecology in Argentina and its contribution to climate resilience?
- ❓ How can participatory action research generate communication strategies that increase the visibility and political impact of agroecology and family farming, recognizing their contribution to the food system's resilience?



Argentina

Lead organization: Mesa Agroalimentaria Argentina (MAA)

Territorial Plan for Participatory Research and Political Action of the MAA

Objectives

- Strengthen coordination between academia and grassroots organizations by forming research teams and generating reports demonstrating the agroecological model's viability.
- Promote local public policies that guarantee access to land, credit, and incentives for agroecology through coordination with municipalities and governance actors.
- Systematize experiences, research, and campaigns linked to the Agroecological Colonies Plan, the National Marketing Network, and the Sovereign Supply Corridors.
- Raise social awareness through forums, visibility actions, and audiovisual content on agroecology to respond to the climate, food, and economic crises.



Research questions

- ✓ What experiences and impacts have agroecology initiatives had at the national level?
- ✓ Which participatory indicators should be prioritized to translate agroecological practices into effective policies on land, financing, and commercialization?
- ✓ How do MAA's public policy proposals contribute to systemic change?
- ✓ How can agroecology be scaled up without falling into extractive logics or losing community autonomy?
- ✓ How can MAA's integration into CLOC-La Via Campesina be leveraged to project our demands in global forums and South-South alliances?
- ✓ What type of relationship with the state can ensure support for agroecology without co-opting or diluting our territorial dynamics?
- ✓ What communication strategies can expand the reach of *Tiempo Rural* and transform the urban consumers' awareness about who produces and guarantees food in Argentina?

Participatory methods

- PAR is led by grassroots organizations, emphasizing gender parity and ethical research protocols.
- Formation of mixed research teams (grassroots-academic).
- Collecting and systematizing territorial data through surveys, interviews, and case studies. Creation of community-led research management councils.
- Development of political-pedagogical tools on agroecology and food sovereignty.
- Communication campaigns (media, podcasts, documentaries).
- Plenary assemblies, mass protest events, and forums.

Desired changes

- ✓ Local ordinances on access to land and rural leasing.
- ✓ Creation of a public food company and agroecological colonies.
- ✓ Support for the Support for the National Agroecology Promotion Program.
- ✓ Inclusion of the MAA Agrifood Program in local policy frameworks.
- ✓ Financing and credit access for family farming.



Members of the partnership

- Fundación MUTE
- Centro de Estudios de la Tierra (CET-UTT)
- Centro de Educación, Formación e Investigación Campesina UST- MCI Somos Tierra -Red Asociada a CLACSO
- Facultad de Ciencias Exactas y Naturales de la Universidad Nacional de Cuyo
- CIPAF- Centro de Investigación y Desarrollo Tecnológico para la Agricultura Familiar Campesina (INTA)
- REGOSH. Laboratorio Agroecológico Abierto
- INCIHUSA-CONICET Centro Científico Tecnológico UNCUYO
- Centro de Estudios Legales y Sociales (CELS)

Brazil

Lead organization: Articulação Semiárido Brasileiro (ASA)/Associação Programa Um Milhão de Cisternas para o Semiárido - APIMC

Diagnosis of Public Policies for Coexistence with the Semi-Arid Region: Results of a Partnership Between the Brazilian State and Civil Society

Collaborative Members

- Instituto de Pesquisa Econômica Aplicada (IPEA) [Institute for Applied Economic Research]
- Articulação Semiárido Brasileiro (ASA) [Brazilian Semi-Arid Network]

Research Questions

- ❓ What advances and challenges have been identified in measures taken for coexisting with the Semi-Arid Region?
- ❓ How do the ASA's actions affect the social, economic, environmental, and territorial conditions in rural communities in small and medium-sized municipalities in the Brazilian Semi-Arid Region?
- ❓ How does promoting agroecology and Coexistence with the Semi-Arid Region affect the climate emergency in the Brazilian Semi-Arid Region?
- ❓ What changes have the adopted measures brought for agrobiodiversity and food security in the communities involved?





Brazil

Lead organization: Centro de Desenvolvimento Agroecológico do Cerrado (CEDAC)

Promoting the municipalization of agroecology

Collaborative Members

- Centro de Desenvolvimento Agroecológico do Cerrado (CEDAC) [Cerrado Agroecological Development Center]
- Hohenheim University
- Federal University of Goiás
- São Camilo University
- CoopCerrado

Research Questions

- ? What are the main barriers to including new farmers and the growth/diversification of agroecology for farmers already participating in the program?
- ? What are the main operational barriers to coordinating supply and logistics for families to participate in the program?
- ? What are the greatest difficulties for stakeholders (public authorities, beneficiaries, CEDAC, CoopCerrado) to implement the program?
- ? What is the current situation of food and nutritional security among beneficiaries and farmers?
- ? What participatory mechanisms can generate greater engagement between farmers and public authorities to solve problems?
- ? What rules are relevant for implementing the program?
- ? Which stakeholders have the most significant influence over the successful implementation of the program? Is there a gender imbalance or exclusion of social groups? If so, how can their participation be increased?
- ? What is the program's capacity to increase production and the number of farmers in the municipalities?
- ? What are the socioeconomic impacts of the program at the family farm level?
- ? What are the impacts on food and nutritional security for farmers and beneficiaries?
- ? What changes have been made to water/soil conservation practices on farms?



Brazil

Lead organization: Serviço de Assessoria a Organizações Populares Rurais (SASOP)

Agroecology in Territories and Public Policies in Bahia in the face of climate change

Collaborative Members

- Articulação de Agroecologia na Bahia (AABA) [Bahia Agroecology Coalition]
- Rede Agroecológica do Baixo Sul e Vale do Jequiçá [Agroecology Network of the Baixo Sul and Jequiçá Valley]
- Rede Mulher do Sertão do São Francisco [Women's Network of the São Francisco Backlands]
- Sertão Agroecológico [Agroecological Backlands - Center for Studies in Agroecology, affiliated with UNIVASF -Federal University of the São Francisco Valley]
- Instituto Federal de Educação, Ciência e Tecnologia Baiano (IF Baiano) [Federal Institute of Education, Science and Technology of Bahia]

Research Questions

- ① Due to climate impacts, what has changed in farming families' food systems over the years?
- ① What agroecological practices are being developed in each agroecosystem studied, and how do they contribute to fighting climate change?
- ① How do traditional local knowledge and social technologies strengthen the resilience of food systems to resist droughts, floods, and other climate variations?
- ① What technical, economic, or social barriers hinder the adoption of more resilient practices?
- ① How do local production and consumption systems contribute to food security in climate crisis scenarios?
- ① How have climate changes interfered with food availability, diversity, and quality?
- ① What is the diet in each season of the year? What changes will occur in food crops? Which public policies positively or negatively impact agroecology and the resilience of food systems in the territories?
- ① What are communities' demands to strengthen agroecology as a strategy to deal with the climate crisis?

Brazil

Lead organization: Articulação Nacional de Agroecologia (ANA)

Agroecology Networks in the Fight Against Climate Change: Action Research from the Territories

Objectives

- Produce knowledge on agroecology as a strategy for climate change adaptation and mitigation, connecting it to gender equality, anti-racist struggles, biodiversity enhancement, and the promotion of fair food systems.
- Focus on spaces for social participation and public policy formulation, including climate policies such as the National Climate Change Policy, the Low Carbon Agriculture Plan, and the Climate Plan.
- Communicate actions and results widely.



Research questions

- ✓ How do territorial agroecology networks contribute to building fair and resilient food systems to address climate change?
- ✓ How can these experiences be expanded and integrated into climate policy structures?
- ✓ What practices and knowledge systems support climate adaptation and mitigation on a territorial scale?

Participatory methods

- **Action Research:**
 - Level 1: National mapping through the Agroecology Network platform.
 - Level 2: Field research in five territorial networks using participatory qualitative and quantitative methodologies.
- **Workshops and dissemination:** Collective construction of instruments and sharing of implementation and results.
- **Participatory systematization:** Gender parity, collective reflection, and knowledge production.
- **Communications strategy:** social media, videos, media campaigns, interactive map, and advocacy materials.

Desired changes

- ✓ Influence Brazil's National Climate Change Policy (PNMC), the Low Carbon Agriculture Plan, and the Climate Plan.
- ✓ Strengthen policies such as the National Policy on Organic Agriculture and Production (PNAPO), the Ecoforte Program, the National School Feeding Policy (PNAE), the Family Farming Food Acquisition Program (PAA), and the National Policy on Technical Assistance and Rural Extension (PNATER).
- ✓ Support the development of public policy projects focused on territories that address agroecology and climate justice.
- ✓ Strengthen the agroecology movement by building knowledge and mobilizing around the issue of climate change.
- ✓ Bring agroecological perspectives to multilateral spaces such as COP30 and the People's Summit.



Members of the partnership

- Grupo de Trabalho de Justiça Climática e Agroecologia da ANA
- FASE – Solidariedade e Educação
- AS-PTA – Agricultura Familiar e Agroecologia
- Associação Agroecológica Tijupá
- Fundação Oswaldo Cruz (Fiocruz)

Brazil

Lead organization: La Via Campesina Brasil (LVC Brasil)

Resilience in rural territories in response to climate change in the Amazon

Objectives

- Systematize realities and challenges in the field through participatory research to identify paths and strategies for the organization.
- Organize and consolidate proposals from Via Campesina organizations on climate issues, aiming at community mobilization and international recognition, including debates at COP-30.
- Promote training, exchange of experiences, and communication through materials such as booklets and audiovisuals to disseminate agroecological proposals and participatory action research methodologies.



Research questions

- ✓ What are the main vulnerabilities and features of resilience in peasant territories?
- ✓ How do social organization, agroecological practices, and gender roles influence climate resilience?
- ✓ What local strategies support climate adaptation and food sovereignty?
- ✓ What actions and timelines are needed to transform the territories?
- ✓ Who are the agents of change and what are their roles in implementation?

Participatory methods

- **PAR:** community-defined indicators; interviews with families and researchers.
- **Regional seminars:** planning, coordination, and validation (including at the COP30 People's Summit).
- **Workshops:** co-design of indicators; application of resilience index tools.
- **Mapping and territorial analysis:** radar diagrams to assess the vulnerability and adaptability of agroecosystem.
- **Gender integration:** feminist perspective in all phases of the project (mapping of roles, equitable participation, etc.).
- **Ethical protocols:** consent, cultural respect, data protection, and benefit sharing.
- **Communication outputs:** booklet, audiovisuals, social media, seminars, and training materials.
- **Advocacy actions:** community consultations, policy dialogue, leadership training, and awareness campaigns.

Desired changes

- ✓ Improve the reach and implementation of public policies: National Policy on Organic Agriculture and Production (PNAPO), the Ecoforte Program, the National School Feeding Policy (PNAE), National Human Rights Policy (PNDH-3), National Policy for the Sustainable Development of Traditional Peoples and Communities (PNPCT), Green Grant Program (Programa Bolsa Verde), and the Family Farming Food Acquisition Program (PAA).
- ✓ Influence the delivery of the PAA (Food Acquisition Program) and PNA (National Climate Adaptation Plan) in Amazonian territories.
- ✓ Advocate for territorialized approaches to climate justice and agroecological transition.



Members of the partnership

- Movimento dos Pescadores e Pescadoras
- Movimento das Mulheres Camponesas
- Movimento dos Pequenos Agricultores
- Coordenação Nacional das Comunidades Quilombolas
- Movimento dos Trabalhadores e Trabalhadoras Rurais Sem Terra
- Movimento dos Atingidos por Barragens
- Universidade Federal do Sul e Sudeste do Pará
- Universidade Federal do Pará
- Instituto Federal do Pará, Castanhal



Colombia

Lead organization: Corporación de Estudios, Educación e Investigación Ambiental (CEAM)

Sustainability and Resilience Networks in Antioquia: A Participatory Action Research Proposal to Scale Up Agroecology

Collaborative Members

- Colombian Biological Agriculture Network (RECAB)
- Red Nacional de Agricultura Familiar (RENAF)
- [National Family Farming Network]
- University of Antioquia (School of Education - Teaching Program in Rural Affairs and Peace)
- University of Antioquia (School of Nutrition and Dietetics)
- Government of Antioquia (Department of the Environment)
- Corporación Autónoma Regional de los Ríos Negro y Nare - CORNARE [Regional Autonomous Corporation of the Negro and Nare Rivers]

Research Questions

- ? What are the multiple benefits of conventional and agroecological AC FEC farms in Antioquia, considering economic and social impacts of participation in public procurement programs and farmers' markets?
- ? How is the multidimensional value of agroecology expressed in local agri-food systems in two subregions of Antioquia, and how can this value be communicated to different audiences to strengthen political advocacy and social acceptance/appropriation?



Colombia

Lead organization: FIAN Colombia

Agroecology for Biodiversity, Nutrition, and Community Health

Collaborative Members

- FIAN Internacional
- Movimiento Social en Defensa de los Ríos Sogamoso y Chucurí [Social Movement in Defense of the Sogamoso and Chucurí Rivers]
- Corredor Afroalimentario del Norte del Departamento del Cauca [Afro-Food Corridor of Northern Cauca]
- Asociación de Mujeres Afrodescendientes del Magdalena Medio (AMAME) [Association of Afro-Descendant Women of Magdalena Medio]
- Red Académica por el Derecho Humano a la Alimentación y Nutrición Adecuadas [Academic Network for the Human Right to Adequate Food and Nutrition]

Research Questions

- ? What does the evidence say about the relationship between agroecological practices and nutritional and health outcomes across diverse food systems?
- ? How do communities engaged in agroecological practices define and experience food sovereignty, nutrition, and health improvements, and which local indicators best capture these transformations?
- ? Which specific agroecological practices are most strongly associated with improving household food diversity, women's well-being, and community resilience (to climate events, market disruptions, pandemics) in the participating territories?
- ? What political, cultural, and institutional barriers shape the integration of agroecological practices into public health and food policies at the local and national levels, and how can communities mobilize to overcome these challenges and advance policy solutions grounded in agroecology?





Colombia

Lead organization: Grupo de Investigación en Agroecología de la Universidad Nacional de Colombia – Sede Palmira (GIAUN)

Strengthening Campesino Agroecological Food Systems to Promote Food Sovereignty, Energy Sovereignty, and Climate Resilience in Valle del Cauca, Colombia

Collaborative Members

- Red de Mercados Agroecológicos Campesinos del Valle del Cauca (REDMAC) [Network of Agroecological Farmers' Markets in Valle del Cauca]

Research Questions

- ❓ What locally co-produced and validated indicators can highlight the contributions of campesino agroecological food systems to food sovereignty, energy sovereignty, and climate resilience?
- ❓ What characteristics, actors, and dynamics of agroecological farmers' markets make them spaces for territorial co-production, stronger urban-rural ties, and health nurturing in its multiple dimensions?
- ❓ What components, processes, and outcomes should be included in a proposal to operationalize campesinos' rights concerning agroecology and farmers' markets?
- ❓ What elements, processes, and products should form part of an academic, technical, political, and public communication strategy that enhances the visibility, recognition, and strengthening of campesino agroecological production systems as pathways toward food sovereignty, energy sovereignty, and climate resilience?



Colombia

Lead organization: Corporación Grupo Semillas

Advocacy to Strengthen Agroecology, Agrobiodiversity, and Peasant, Community and Family Farming in Response to The Climate Crisis in Colombia.

Objectives

- Develop a process of coordination between networks of organizations for the generation and implementation of policy advocacy routes.
- Design and implement a participatory national communications strategy for advocacy in the country's social sphere, positioning agroecology, Peasant, Family, and Community Farming (ACFEC), and agrobiodiversity.
- Develop PAR projects that generate information to strengthen the networks' capacities for political advocacy.



Research questions

- ✓ What are the territorial challenges and strategies for mitigating climate change impacts on the conservation and management of community seed banks?
- ✓ Are Participatory Guarantee Systems (PGS) an effective tool for accessing markets for products and seeds from peasant, family, ethnic, and community farming?
- ✓ To what extent do practices developed by community processes in tropical dry forests respond to the protection of local agrobiodiversity and enable responses to the risks arising from climate change and crises?
- ✓ How do the agroecology policies currently being implemented at the national and departmental levels in Colombia enable the scaling up of agroecology, especially at the territorial level?
- ✓ What values, practices, and discourses motivate the social mobilization of the Colombian Agroecological Movement in all links of agroecology-based food systems?

Participatory methods

- **PAR:** local and national research proposals carried out jointly by grassroots partners and academics.
- **Mapping and diagnosis:** Identify political advocacy actors, communication capacities, and organizational priorities.
- **Political advocacy strategy:** common agendas, training, monitoring, and action planning.
- **Participatory recovery of memories and trajectories:** in-depth interviews with key actors to recover the trajectories and memories of agroecology in Colombia.
- **Workshops for collective analysis and prospective construction:** collective and prospective analysis to collectively interpret research findings and make them useful to political advocacy.
- **Simulation of scenarios and social roles:** A technique that enables people to understand different perspectives on power by dramatizing real or hypothetical situations.
- **Political communication and persuasion laboratory:** A practical space to strengthen discursive, ethical, and speaking skills for advocacy and mobilization.
- **Coordination of advocacy campaigns:** Colombia Libre de Transgénicos (Colombia Free of GMOs), Semillas Bien Común (Seeds as a Common Good), and Llevo el Campo Colombiano (I Carry the Colombian Countryside).

Desired changes

- ✓ Strengthen the articulation of social and community networks to advance joint actions that influence public policies on agroecology, agrobiodiversity, and family, peasant, ethnic, and community-based agriculture.
- ✓ Make visible and legitimize territorial actions that defend agroecological systems resilient to climate change and influence rural policies.
- ✓ Position these issues in public opinion and promote the adoption of progressive policies by governments.
- ✓ Protect agrobiodiversity as a common good.
- ✓ Reform intellectual property and seed certification regulations.
- ✓ Develop policies for native seeds and biosafety measures against transgenic crops.
- ✓ Create legal instruments to support agroecology programs and the recognition of Participatory Guarantee Systems (PGS).
- ✓ Promote the transition toward agroecological agriculture.
- ✓ Support Indigenous communities in implementing Constitutional Court ruling T-247-23.



Members of the partnership

- National Family Farming Network (RENAF)
- Colombian Free Seed Network (RSLC)
- Latin American and Caribbean Agroecology Movement (MAELA)
- Colombian Agroecology Movement (MACO)

Mexico

Lead organization: Asamblea de Pueblos Indígenas por la Soberanía Alimentaria APISA A.C.

Defending Territory, Sowing Sovereignty: Indigenous Responses to the Advance of the Industrial Model

Collaborative Members

- Grupo de Desarrollo Rural Integral Vicente Guerrero A.C. [Vicente Guerrero Comprehensive Rural Development Group]
- Programa de Posgrado en Agroecología del Colegio de Postgraduados de Chapingo (COLPOS) [Graduate Program in Agroecology at the Postgraduate College in Chapingo]
- Instituto para la Conservación de la Cordillera Neovolcánica ante el Cambio Climático (ICCoNeCC) [Institute for the Conservation of the Neovolcanic Mountain Range in the Face of Climate Change]
- Casa Gallina A.C. (Hen House)

Research Questions

- ① How do community-based agroecological practices in Indigenous territories contribute to building food sovereignty?
- ① What training methodologies strengthen self-determination and community leadership under high external pressure in territories?
- ① How do Indigenous knowledge and scientific approaches interact in co-creating agroecological solutions?
- ① Which community indicators can capture structural change in agrifood systems?
- ① How do training processes influence the legal and political defense of the territory?





Mexico

Lead organization: Asociación Nacional de Empresas Comercializadoras del Campo (ANEC)

Using Participatory Research to Shape Public Policies and the Design of Modern Tools for the Promotion of Agroecology to Mitigate Climate Change and Feed the Mexican People

Collaborative Members

- Servicios Integrales para el Desarrollo Campesino S.C. [Comprehensive Services for Campesino Development]
- Movimiento Agroecológico Mexicano [Mexican Agroecological Movement]
- El Jareño de Nayarit S.P.R. de R.L. [El Jareño of Nayarit]
- Desarrollo de Negocios YECA S.A. de C.V. [YECA Business Development]
- Productores de Maíz de la Costa Chica S.P.R. de R.L. (PROMACOH) [Corn Producers of the Costa Chica]
- Productores Unidos de Valle Hermoso Tamaulipas S.P.R. de R.L. (PRUVATAM) [United Producers of Valle Hermoso Tamaulipas]
- Unión de Ejidos de Producción, Industrialización y Comercialización Agropecuaria 16 de Abril, R.L. [16 de Abril Union of Ejidos for Agricultural Production, Industrialization, and Commercialization]
- Consorcio Social del Café Mexicano A.C. [Social Consortium of Mexican Coffee]
- Secretaría de Ciencia, Humanidades, Tecnología e Innovación (SECIHTI) [Secretariat of Science, Humanities, Technology and Innovation]
- Departamento de Agroecología de Universidad Autónoma Chapingo [Department of Agroecology, Chapingo Autonomous University]
- Colegio de Postgraduados (COLPOS) [Postgraduate College]
- Asociación Nacional de Empresas Comercializadoras de Productores del Campo A.C. (ANEC) [National Association of Rural Producers' Commercial Enterprises]
- Unión de Ejidos de Producción Agropecuaria de la Ex laguna de Magdalena Gral. Lázaro Cárdenas [Union of Agricultural Production Ejidos of the Magdalena Lake Basin, General Lázaro Cárdenas]

Research Questions

- What is your opinion on agroecology?
- Are you aware of the benefits of ecological farming?
- What is needed to produce healthy and sustainable food?
- In your work, do you carry out any activities promoting agroecological food production practices?
- Are the government's current actions on agroecology sufficient?
- Do you think healthy and sustainable food production should be promoted more vigorously?
- In your state, is there a university program on agroecology that promotes and encourages safe food production?
- If it were up to you, would you support more agroecological actions in your community (group) to improve food quality?
- What must be done to get more producers to join the agroecological transition?
- What do you, as agricultural producers, require to do more and better agroecology?
- What is the main challenge producers face in advancing the agroecological transition and the production of healthy food?
- What is needed to develop and improve the agroecological processes already being carried out by some producers?



Mexico

Lead organization: Universidad Autónoma de Yucatán

Community Agroecology and Climate Resilience in the Puuc Biocultural Corridor:
Participatory Action Research for Sustainable Agrifood Systems

Collaborative Members

- Universidad Tecnológica del Maya [Mayab Technological University]
- Universidad para el Bienestar Benito Juárez (UBBJ) Tekax [Benito Juárez García University for Well-Being, Tekax campus]
- Junta Intermunicipal Biocultural del Puuc (JIBIOPUUC) [Intermunicipal Association for the Puuc Biocultural Region]
- Red Académica de la Milpa Maya Peninsular [Academic Network for the Peninsular Maya Milpa]
- Red de Patrimonio Biocultural México [Network on Biocultural Heritage in Mexico]
- Red de Mujeres Guardianas del Puuc [Puuc Women Guardians Network]
- Productores Agrícolas y Milperas del Corredor Agroalimentario Puuc-Milpero [Agricultural and Milpa Producers of the Puuc-Milpero Agrifood Corridor]
- The Nature Conservancy (TNC)
- Sistema Participativo de Garantía Agroecológica de Yucatán (SPGY) [Participatory Agroecological Guarantee System of Yucatán]
- United Nations Development Program (UNDP) Global Environment Facility Small Grants Programme
- Fundación Legorreta Hernández [Legorreta Hernández Foundation]
- Municipality of Muna; Municipality of Oxkutzcab; Municipality of Tekax; Municipality of Ticul ; Municipality of Santa Elena; Municipality of Tzucucab; Municipality of Yaxcabá Municipality of Peto
- Secretaría de Desarrollo Sustentable (SDS) - Gobierno del Estado de Yucatán [Secretariat of Sustainable Development of the Government of the State of Yucatán]
- Secretaría General de Educación de Yucatán (SEGEY) [Secretariat of Education of the State of Yucatán]

Research Questions

- Who are the leading actors (producers, cooperatives, authorities, NGOs, researchers, consumers) influencing policies, agroecological transition, and fair trade in the JIBIOPUUC, and what roles do they play?
- What existing alliances have the potential to drive change?
- What resources do these actors bring to influence public policy, education, markets, and consumption patterns?
- What climate, economic, or social risks currently affect producers and consumers?

Mexico

Lead organization: Instituto Agroecológico Latinoamericano - México (IALA México)

Design of epistemological and curricular approaches for the Territorialized IALA Mexico, as tool to promote climate resilience and political advocacy and to strengthen agri-food systems.

Objectives

- Design and implement IALA Mexico's pedagogical-political project, starting with an inventory of agroecological practices and knowledge that will lead to youth training processes.
- Create an information and communication platform to share agroecological experiences, evidence, and a PostGIS GeoPortal featuring the IALA territories.



Research questions

- ✓ **Re-signification of agri-food and climate resilience practices and knowledge:** How and by whom is peasant life valued? How can indigenous and peasant epistemologies shape new generations? What living knowledges strengthen climate resilience, and how can policies be influenced to recognize local knowledge?
- ✓ **Training in community agroecology:** Why is this knowledge ecological? How is it shared and strengthened within organizations? What aspects of peasant life should be cared for, changed, or discarded?
- ✓ **Shadow reports for advocacy:** Which agri-food policies affect peasant and territorial rights? Finally, the goal is to communicate experiences and evidence: how can we share and disseminate our agroecological practices and learnings in the face of the climate crisis?

Participatory methods

- Inventory of agroecological practices linked to 10 verbs (produce, heal, organize, etc.)—curricula design and epistemological models rooted in local traditions.
- **Training and exchange:** regional workshops and artistic expression of their results.
- **Communication tools:** Digital networking platform, Zimaboard kits for rural areas, parallel reports, case studies, and campaigns on water and seed rights.

Desired changes

- ✓ Reform existing agri-food programs to strengthen food sovereignty.
- ✓ Promote educational policies that validate rural and Indigenous pedagogy.
- ✓ Protect communal seeds from privatization (e.g., UPOV 91).
- ✓ Influence water and forest conservation policies using the experience of grassroots communities.

Members of the partnership

- Territorialized IALAs and Political-Pedagogical Committees
- Indigenous organizations and communities in collaboration with 12 territorialized IALAs (9 initially and 12 today):
 1. Costa Grande Ejidos Coalition , Guerrero
 2. UNORCA Meseta Purépecha, Michoacán
 3. Sanzekan Tinemi, Chilapa, Guerrero
 4. ARIC Unión de Uniones, Ocosingo, Chiapas
 5. OIT EAPPI, Puebla
 6. PROFECTAR, Sierra Tarahumara, Chihuahua
 7. UNOSJO, Guelatao, Oaxaca
 8. UCANG, ASANG, COCIRA, Northern Guanajuato
 9. RMGGS
 10. UCIRI
 11. NAY BY LU,ÚM
 12. Comunidades Campesinas en Camino
- Collaborators:
 - SINE-COMUNARR
 - CEDESA
 - Team of Itinerant Educators
- Alliances and collaborations: ENES UNAM, ECOSUR, ETC Group, GRAIN, CECCAM, ISIA, OACO, CEDESA.



Mexico

Lead organization: Xilotl Asociación para el Desarrollo Social A.C.

Resilient Tlaxcala: Agroecology and Participatory Action Research in the Defense of Native Maize for Food System Transformation

Objectives

- Stronger public policies in Tlaxcala, emphasizing the Federal Law for the Protection of Native Maize (LFPM), using the PAR process to preserve and promote Tlaxcala's native maize, ensuring its genetic diversity, sustainability, and biocultural relevance.



Research questions

- What is legally and socially required to reactivate the regulation of (LFPM) in the agricultural sector, establish the State Maize Council, and promote its socialization among peasant and Indigenous communities, ejidos, and producers in Tlaxcala?
- What are the threats to local agri-food systems that the regulation of the LFPM could help to reverse?
- What is the current state of the native maize agroecosystem and its germplasm in the ejido farmer and indigenous communities of the state of Tlaxcala?
- What obstacles must the ejidos and farmers and indigenous communities of the state of Tlaxcala overcome to become self-managed in the conservation and preservation of their native maize?
- What complementary practices need to be implemented in the communities and ejidos of Tlaxcala to work more sustainably within the native maize agroecosystem?

Participatory methods

- Action Research:** Quantitative/qualitative data, participatory diagnostics, and validation.
- Assemblies and workshops:** Regional/state events with ejidos and communities.
- Legal support and advocacy:** Drafting regulations, campaigns, and legislative participation.
- Communications:** Infographics, videos, petitions, and outreach across multiple platforms.
- Gender approach:** Comparative analysis of the roles and barriers faced by women and men.

Desired changes

- Implementation of the LFPM, its regulations, and budget.
- Stronger multi-stakeholder alliances for the defense of native germplasm from an integrated perspective.
- A broad social base created and consolidated to support the establishment of the State Maize Council.
- Greater inclusion and representation of local communities in maize production and protection decision-making.
- Increase in the number of producers adopting sustainable agricultural and consumption practices.
- Generation of public economic incentives that strengthen small-scale producers.



Members of the partnership

- Grupo Vicente Guerrero
- CEDICAM
- Mil A.C.
- Ser Mixes
- APISA
- Benemérita Universidad Autónoma de Puebla (BUAP)
- Indigenous communities (Axotla del Monte, Teolocholco, Cuahtenco, Vicente Guerrero)
- 44 ejidos in Tlaxcala
- Biocultural Alliance (Cuba, Guatemala, Belize)

United States

Lead organization: Instituto para la Agroecología, Investigación y Acción (IALA-PR)

IALA-PR: Scaling up Agroecology, Climate Resilience and Advocacy by Strengthening Agroecological Schools' Network Ecosystem in Puerto Rico

Collaborative Members

- La Escuela Agroecológica El Josco Bravo
- Huerto Semilla
- Proyecto Escuela Timonera
- Escuelita Rural Proyecto Agroecológico Campesino
- SAMAR
- Aula Semilla
- Finca Guakiá
- Escuela Agroforestal para Mujeres Pachamama
- Pedagogía de la Tierra
- Universidad Interamericana de Puerto Rico: Law School
- Escuela Graduada de Trabajo Social Beatriz Lasalle
- Universidad de Puerto Rico
- Apoyo Legal Al Emprendimiento Comunitario
- Organización Boricua de Agricultura Ecológica
- CLOC - La Vía Campesina
- Región Caribe

Research Questions

- ? What shared understanding is needed for a stable collaboration promoting and supporting political formation and agroecological practices in Puerto Rico by farmer-led schools, and how can IALA-PR accompany them to strengthen its reach?
- ? What systemic obstacles can we identify and address in a decade through an agroecological school program composed by farmer-led schools?



United States

Lead organization: Native American Food Sovereignty Alliance (NAFSA)

Developing an Indigenous Food Sovereignty Toolkit to advocate for Indigenous food systems

Collaborative Members

- Amy June, Good Way Farm
- Courtney Streett, Native Roots Farm Foundation
- Jessica Shenandoah, Onkwe Inc.
- Benjamin Butler, Rez Dog Ranch LLC
- Anna Williams, Indigenous Seed Keeper Network
- Indigenous Seed Keeper Network (ISKN)
- Alexandria Cruz, Grinding Stone Collective
- Roxanne Swentzell, Flowering Tree Permaculture Institute
- Northern Arizona University (NAU)
- Kaya DeerInWater, Indigenous Seed Keeper Network

Research Questions

- ? What tools, resources, and processes best prepare communities to discuss and advocate for tribal-level food sovereignty policies when they choose to do so?
- ? How are farmers, growers, seed keepers, and the people in tribal food sovereignty responding to challenges like unstable funding, policy restrictions, and limited access to land, water, and traditional foods, and what strategies are proving most resilient?
- ? What approaches to community-based food sovereignty (e.g., gardening, seed sharing, traditional food practices, curriculum integration) are most effective and scalable across diverse Tribal contexts?
- ? How can communities strengthen intergenerational engagement, especially between youth and Elders, to support leadership and cultural continuity in food sovereignty?



United States

Lead organization: Institute for Agriculture and Trade Policy (IATP) & MinneAg Network Collaborative

Policy Design to Strengthen Agroecology Among Small and Medium-Scale Producers as a Pathway to Climate Resilience

Objectives

- Use participatory data collection processes to identify gaps and opportunities for scaling up agroecology and climate justice
- Map the use of agroecology and climate justice practices, the flow of public funds to support them, and social networks in Minnesota’s agrifood supply chains.
- Use civic engagement resources developed by MinneAg and project research to support advocacy for greater public investment in agroecology.
- Include more Indigenous, immigrant, BIPOC, and women farmers in decision-making.
- Coordinate MinneAg civic engagement in state decision-making.
- Track and report on legislation passed/stalled.



Research questions

- What are climate policies and public programs associated with small & medium-sized farmers’ engagement in AE and climate-resilient practices?
- What are the characteristics of farms, farmers, and networks engaging in agroecology in Minnesota?

Participatory methods

- PAR with small and mid-scale farmers.
- Map the use of AE and climate justice practices, the flow of public funds to support them, and social networks in Minnesota’s agrifood supply chains.
- Document the positive contribution of small and medium-scale producers and their markets.
- Policy analysis and development of climate resilience frameworks.
- Advocacy campaigns engaging policymakers and farmer organizations.
- Research dissemination through educational institutions and farmer cooperatives.



Desired changes

- Increase policy support for agroecology in state and regional agricultural programs.
- Develop a climate policy agenda for small and mid-sized farms, making the case for AE as the pathway to climate resilience.
- Strength regional farmer networks for knowledge sharing and advocacy.

Members of the partnership

- University of Minnesota (prof Hikaru Peterson)
- MinneAg Network
- Statewide Cooperative Partnership
- Minnesota Department of Agriculture





United States

Lead organization: Southern Black Farmers Community Led Fund (SBFCLF)

Agroecology and Black Agrarians: Unsung Climate and Culture Catalysts

Objectives

- Cultivate interest and involvement by 50-100 PAR researchers and interviewees as a base of grassroots organizers to execute an advocacy campaign.
- Result in an informative, attractive, and accessible report available in print and online.
- Generate a public dialogue about the current state of rural southern Black farmers through radio programming, local print media articles, local podcast interviews, and some national media.
- Host town hall and other meetings in each of the three targeted states with elected officials and other policymakers about the report recommendations.



Research questions

- ✓ What are the experiences of Black farmers regarding climate change on their farms?
- ✓ How do Black farmers and rural communities perceive current climate adaptation policies?
- ✓ What farming practices enhance resilience or contribute to vulnerability?
- ✓ What policy interventions are needed to support Black agrarian communities in climate resilience?

Participatory methods

- PAR with Black farmers and grassroots organizations.
- Historical and Policy Analysis – Mapping Black agrarian traditions and systemic barriers.
- Community-Led Knowledge Sharing – Farmer-to-farmer training and storytelling.
- Advocacy & Coalition Building – Strengthening alliances with Black-led food justice networks.
- Engagement with Policymakers – Developing policy recommendations to support Black agroecology movements.



Desired changes

- ✓ Expanding and decentralizing policy support and public funding for Black-led agroecology initiatives (native Afroecological practices)
- ✓ Recognition of Black involvement and leadership in discussions about climate resilience solutions

Members of the partnership

- National Black Food and Justice Alliance (NBFJA)
- Mississippi Center for Cultural Production (Sipp Culture)
- Alabama State Association of Cooperatives (ASAC)
- Mississippi Association of Cooperatives (MAC)
- Southern Rural Black Women’s Initiative for Social and Economic Justice (SRBWI)
- Southeast African American Farmers Organic Network (SAAFON)
- Federation of Southern Cooperatives





United States

Lead organization: National Family Farm Coalition (NFFC)

Farmland for Farmers: The Bedrock of Resilient Food Systems

Objectives

- | | |
|--|--|
| <ul style="list-style-type: none"> Produce a standard analysis applicable across diverse member groups, geographies, and farmer constituencies. | <ul style="list-style-type: none"> Identify and articulate the role and impact of speculative corporate investment on farmer and food system resilience across NFFC's impacted communities. |
| <ul style="list-style-type: none"> Examine relationships between farmer land-tenure security and environmental resilience, and apply that analysis to inform policy advocacy. | <ul style="list-style-type: none"> Develop a communications strategy around public investment in farmland to ensure that this issue remains a national conversation. |
| <ul style="list-style-type: none"> Create a collective member-led vision for a future food system if public policy and programs were scaled up over the long term. | <ul style="list-style-type: none"> Conduct targeted political education on food sovereignty, land, and agroecology to empower more family farmers to speak out against the corporate takeover of our food system. |



Research questions

- What are the key land tenure challenges and opportunities encountered by small and mid-scale farmers?
- How do these land tenure challenges impact the socio-ecological, climate, and food system resilience of grassroots partners?
- How are public funds being used to address land tenure issues, and what are their socio-ecological impacts?
- How can federal policies be improved to better support family farmers practicing agroecology?

Participatory methods

- PAR with researchers, family farmers, and rural communities / Political Education
- Discourse Analysis – Identifying systemic barriers and solutions.
- Legislative Engagement & Policy Advocacy – Proposing evidence-based policy reforms.

Desired changes

- Strengthening land access and tenure security for small and mid-sized farmers, with a racial equity and youth focus:
 - Scale up Heirs' Property Relending Program.
 - Create a USDA land access grant program to support land acquisition by historically underserved farmers and ranchers.
 - Expand funding for, and effectively implement, the Indian Tribal Land Acquisition Loan and the Highly Fractionated Indian Land Loan Programs.
- Increasing public investment in agroecological farming, land trusts, agrarian commons, and other community-based land tenure arrangements.
- Advocating for policy changes to end corporate land grabs.



Members of the partnership

Grassroots partners:

- Women, Food, and Agriculture Network (Midwest/National)
- Federation of Southern Cooperatives (South)
- Land Loss Prevention Project (Southeast, North Carolina)
- Agrarian Trust (Northeast/National)
- Rural Advancement Foundation International (Southeast)
- Northeast Organic Farmers Association, New Jersey (Mid-Atlantic, New Jersey)

Academic Research Partners: Vermont Law School, University of Kentucky, University of California, Santa Cruz, University of Vermont Institute for Agroecology.

United States

Lead organization: Pesticide Action Network North America (PAN)

Advancing Sustainable Pest Management as Procurement Criteria in California to increase Agroecology and Climate Resilience

Objectives

- Working group members and other allies will develop informed/ground-truthed advocacy strategies to implement near-term goals of a multi-agency Sustainable Pest Management (SPM) Roadmap
- California decision makers and procurement staff at state institutions are better informed on ecological approaches to pest management and what farm compliance with SPM could entail.
- The final SPM criteria applied to contracts in 2024-2026 reflect the advocacy coalition's goals for compliance criteria that favor more equitable access to contracts and reduce the use of highly hazardous pesticides.



Research questions

- How do we shift the state institutional procurement market to purchase food from agroecology-aligned farms, particularly for small farmers, Indigenous, racial, and ethnic minority operations?

Participatory methods

- PAR with stakeholders, including small farmers and their aggregators (co-ops/food hubs).
- Policy analysis and advocacy at the state level.
- Public awareness campaigns on pesticide risks and agroecology benefits.
- Collaborative knowledge-sharing through farmer and Indigenous networks.

Desired changes

- Strengthening state policy incentives to reduce pesticide use and promote agroecology
- Expanding farmer market access and opportunities to transition to pesticide-free and agroecological practices
- Amplifying farmer-led advocacy in shaping agroecology policies

Members of the partnership

- Lideres Campesinas
- Community Alliance for Family Farmers (CAFF)
- Californians for Pesticide Reform (CPR)
- California Farmworker Coalition (CFC)
- California Certified Organic Farmers (CCOF)
- Berkeley Food Institute (BFI) of the University of California, Berkeley
- Agricultural Platform Collective (APC)
- California Farmworker Justice Collaborative (CFJC)
- Central California Environmental Justice Network (CCEJN)
- Center for Good Food Purchasing (CGFP)

India

Lead organization: Centre for Sustainable Agriculture (CSA)

Kisan Mitra: Building a Policy Ecosystem for Scaling Up Agroecology-Based Food Systems

Objectives

- Analyze past and current policies and support systems shaping agroecology in Andhra Pradesh, Odisha, and Telangana, assessing interconnected impacts on household incomes, nutrition, climate risks, resources, and emissions.
- Identify and prioritize key enabling factors for the adoption of agroecology in all three states.
- Produce policy and practice briefs on instruments affecting agroecology adoption, livelihoods, climate adaptation/ mitigation, and transition progress.
- Co-design a minimalist dynamic data management system that enables the impact assessments of agroecology programmes on the ground and measures ecosystem services and co-benefits from agroecology.
- Build alliances with stakeholders to establish a network for evidence generation, policy analysis, and exchange of learnings that sustains advocacy, training, and support for agroecology beyond the project.



Research questions

- ✓ What is the adoption status of organic/natural farming, as well as policies and institutional instruments for promoting agroecological practices in Andhra Pradesh, Telangana, and Odisha?
- ✓ What are the key enabling factors for adopting and sustaining agroecological practices?
- ✓ What policy support systems and institutional innovations are needed to accelerate and sustain the adoption of large-scale agroecological practices beyond the lifespan of policy-initiated programs?
- ✓ How can a minimalist, integrated data management system be established to enable the learning, measurement, monitoring, and sustainability of agroecological practices?

Participatory methods

- Desk Review & Policy Analysis – Gap assessment, understanding grassroots pilots & policy alternatives, and identifying relevant stakeholders & participants for PAR.
- PAR: consultative workshops, focus groups, Participatory Rural Appraisals (PRAs), discussions, and interviews to understand stakeholders' perspectives at the micro, meso, and macro levels (farmers, community collectives, CSOs, policymakers, researchers, and government officials).
- Data-Driven Decision Making – Establishing a dynamic data management system based on PAR findings to assess agroecological transitions and their impact.
- Advocacy & Communication Strategy – Policy briefs and recommendations, webinars, and stakeholder alliances to communicate and disseminate our findings.

Desired changes

- ✓ Strengthen the Science-Policy-Society Interface (SPI) to enable evidence-based decision-making on policies.
- ✓ Build an Agroecology Policy Observatory to distill global evidence and experiences of policy support for agroecology: digital repository of best practices in policy.
- ✓ Promote and advocate for effective governance models and institutional frameworks for long-term support of farmer-centric agroecological transitions.



Members of the partnership

- Deccan Development Society
- University of York (UK)
- University of Manchester (UK)
- Aegion Dynamic Solutions LLP
- National Coalition for Natural Farming (NCNF)

India

Lead organization: National Coalition for Natural Farming (NCNF)

Participatory Action Research to Strengthen and Scale Up
Agroecological Transitions

Objectives

- **Effective Farmer-to-Farmer Extension Models** with NCNF partners, for civil society organizations and state departments of agriculture/horticulture/animal husbandry to transition towards effective farmer-to-farmer extension.
- **Strengthened Government Engagement:** Document experiences and improvement areas in Policies, Schemes, Statutes, and Budgets to orient them increasingly towards agroecology.
- **Enhanced knowledge of government schemes and policies** for civil society to articulate and enable supportive schemes and policies at the union and state government levels that promote sustainability, diversity, and justice as agriculture adapts to climate change.



Research questions

- ✓ What are the most effective farmer-to-farmer extension models for promoting agroecology?
- ✓ What knowledge and skill sets are necessary to successfully enable farmers to transition to agroecology?
- ✓ What policy gaps exist in government schemes/budgets/policies regarding agroecological transitions?
- ✓ How can government support mechanisms be improved to scale up agroecological practices?

Participatory methods

- **PAR** with farmers, CSOs, policymakers, and researchers.
- **Farmer-to-Farmer Extension Studies** – Identifying best practices and scaling models.
- **Government Policy and Budgetary Analysis** – Assessing policy gaps and proposing improvements.
- **Stakeholder Engagement & Advocacy** – Involving policymakers, grassroots movements, and research institutions.
- **Knowledge Dissemination & Capacity Building** – Training programs, workshops, and policy dialogues.



Desired changes

- ✓ Stronger **farmer-led extension systems** for knowledge sharing and skill development.
- ✓ Advocacy for **policy and budgetary reforms** to align government support with agroecology.
- ✓ Enhanced **local governance mechanisms** to support agroecological transitions.
- ✓ Promotion of **long-term institutional frameworks** to sustain agroecology beyond short-term initiatives.

Members of the partnership

- Shiv Nadar Institution of Eminence
- Institute of Rural Management, Anand (IRMA)
- **Other supporting partners:** Vaagdhara, Seva Mandir, Samaj Pragati Sahyog, Sampark, Utthan, Cohesion Foundation, PGVS, YRA, Prakruti, Gaolao Trust, Khoj, Gram Seva Mandal, Salaiban, Krushi Vikas, Punarnava Ecological Services, SSP, SOPPECOM, Chetana Vikas, Dharamitra, Bajaj Foundation, CPC.



India

Lead organization: NIRMAAN Organization

Participatory Action Research for landscape-level agro-ecological transformation towards nutrition-centric local production-local consumption paradigm

Collaborative Members

- National Coalition for Natural Farming (NCFN)
- Department of Agriculture, Dantewada (C.G)
- Bhoomgaadi Organic Farmer's Producer Company Limited

Research Questions

- ❓ How have the food systems of Indigenous communities in Bastar, particularly Dantewada, changed over time? What are the underlying reasons for these shifts, and what critical gaps exist today in local production and dietary diversity?
- ❓ What agroecology-based strategies and interventions rooted in traditional wisdom can effectively increase the production and consumption of local and diverse food, enabling Bastar's communities to achieve food self-sufficiency and nutrition security?
- ❓ What has been the process flow, key steps, and roles of various stakeholders in Dantewada's large-scale transition to agroecology? What are the challenges faced by communities and farmers in Bijapur and Sukma districts, and what possibilities do they envision for a similar transformation in their region?

India

Lead organization: Preservation and Proliferation of Rural Resources and Nature (PRAN)

Sustainable Livelihoods for Smallholders with Agroecology and Natural Farming

Collaborative Members

- Groundswell International
- Youth Collectives and Schools
- Local Governance Institutions
- Panchayats, Block-level Committees, District Level Institutions
- Common Interest Groups and Self-Help Groups (SHGs)

Research Questions

- ① **Agroecological Effectiveness:** How do SRI Vidhi and natural farming practices influence soil health, water-use efficiency, biodiversity, and crop productivity compared to conventional farming in Garhpura and Chhaurahi?
- ① **Livelihood and Economic Impacts:** What are the short- and medium-term effects of adopting agroecology on household income, input costs, and resilience to climate shocks among smallholder farmers?
- ① **Gender and Nutrition Outcomes:** How does women's participation in agroecology and natural farming affect decision-making power, resource access, household dietary diversity and nutrition improvements?
- ① **Policy and Institutional Pathways:** What policy incentives, institutional mechanisms, and extension approaches are most effective in scaling agroecology, and how farmer-led evidence can influence district- and state-level planning?

Indonesia

Lead organization: Serikat Petani Indonesia (SPI)

Developing Food Sovereignty Areas to Strengthen Climate Resilience through Collaborative Research on Agroecology Practices and Advocacy

Objectives

- Document and analyze agroecological practices by gathering data on how farmers implement them and identifying key challenges and obstacles.
- Strengthen farmers' production capacity through training on organic fertilizer, pesticide, and seed production to reduce reliance on chemical inputs.
- Advocate for supportive policies using project findings to encourage government action in strengthening agroecological farming.
- Build and empower cooperatives as farmer-led economic institutions to improve market access, shorten supply chains, and mobilize collective capital.
- Promote agroecology through communication by documenting trainings and sharing them in popular media to spread awareness across Indonesia.



Research questions

- ✓ How secure is peasant access to land and natural resources in Food Sovereignty Area (FSA) territories?
- ✓ Which agroecological crops best adapt to local climate and soil conditions?
- ✓ How does agroecology impact productivity, production costs, environmental preservation, and nutrition?
- ✓ How do FSAs improve peasant livelihoods and autonomy within the food system?

Participatory methods

- **Participatory Action Research** across four food system pillars: land access, production methods, distribution, and peasant institutions.
- **FGDs and in-depth interviews** with farmers, Indigenous communities, and local actors in three provinces.
- **Policy Analysis** on national and local laws impacting food systems.
- **Capacity Building** – Trainings on agroecological practices, seed saving, organic inputs, and market access.
- **Dissemination & Advocacy** – Seminars, public campaigns, lobbying the government using research outputs.



Desired changes

- ✓ Repeal of the Job Creation Law due to its adverse impact on agrarian justice.
- ✓ Reform of fertilizer subsidy and seed policies to support agroecology over chemical agriculture.
- ✓ Adoption of FSA as a national food policy model, replacing food estate programs.

Members of the partnership

- National Board of Management of Indonesian Peasant Union (National)
- Provincial Board of Management of Indonesian Peasant Union (DPW), West Sumatra
- DPW East Nusa Tenggara
- DPW South Kalimantan
- Randa Sinaga (PUSKAHAP, University of North Sumatra)

Indonesia

Lead organization: Papua Democratic Institute (PD-Institute), former KKDP

Understanding the Food System Transformation and Resilience Strategy of Indigenous Papua

Objectives

- Document and revitalize Indigenous agricultural systems to strengthen Papuan communities' identity, culture, and livelihoods in the face of structural threats.
- Provide spatial and technical data for policy planning that recognizes Indigenous land ownership and supports sustainable development.
- Support the Indigenous organizations Dewan Adat La Pago in protecting land rights and advancing community-led strategies.

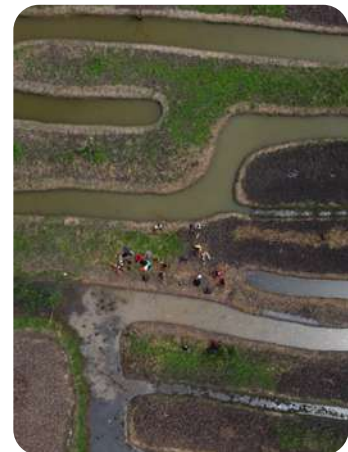


Research questions

- ✓ Who are the indigenous peoples of Wamena, and what are their agricultural systems and traditional livelihoods?
- ✓ What changes have occurred in these systems, and what are their perceived impacts?
- ✓ What are the drivers of current livelihood insecurities?
- ✓ What are the sources and strategies of indigenous resilience in food and farming systems?

Participatory methods

- Indigenous Methodology & PAR – Storytelling, reflection, community-led data collection.
- Data Collection & Analysis – Focus on lived experiences, intergenerational and gendered perspectives.
- Document Review & Policy Analysis – Evaluation of spatial planning and development policies.
- Community Engagement & Capacity Building – Inclusion of elders, youth, women, and customary institutions.
- Advocacy Outputs – Policy drafts, legal documents, public consultations, and community-facing publications.



Desired changes

- ✓ Development of regional regulations recognizing and protecting Indigenous agricultural systems and territories
- ✓ Inclusion of customary land use and food systems in local government development and spatial planning
- ✓ Strengthen indigenous community rights through evidence-based, participatory legal frameworks

Members of the partnership

- Jaringan Kerja Rakyat Papua (JERAT)
- SWARA Akar Papua (SWAP)
- Dewan Adat La Pago (Customary Council)

Indonesia

Lead organization: The People's Coalition for Fisheries Justice (Koalisi Rakyat Untuk Keadilan Perikanan) (KIARA)

Through Education, Strengthening the Grassroot of the Fisherwomen's Movement in Facing the Climate Crisis and Food Crisis in Indonesia

Collaborative Members

- Bina Desa [Indonesian Secretariat for the Development of Human Resources in Rural Areas]
- Rignolda Djamaluddin, Lecturer in Oceanography at the University of Sam Ratulangi, Manado, North Sulawesi

Research Questions

- ❓ How do Indonesian MSP (Marine Spatial Planning) regulations facilitate the expansion of extractive and exploitative industries?
- ❓ What are the impacts of the MSP implementation on coastal communities, particularly in the context of the climate and food crises in Indonesia?
- ❓ What are the impacts of MSP implementation from a gender perspective?
- ❓ What are the viable community-based agroecological alternatives that can help the community resilience from the extractive economy development model?

Indonesia

Lead organization: Komite Nasional Serikat Perempuan Indonesia (SERUNI)

Community-Led Agroecology for Climate Resilience: A Collaborative Research and Advocacy Initiative with Researchers, Peasant Women, Youth, and Indigenous Communities

Collaborative Members

- Sakai Community
- Cibaliung Peasant Women's Community
- Institute for National and Democracy Studies (INDIES)

Research Questions

- ① What are the most effective agroecological practices to enhance climate resilience in food systems?
- ① How do Indigenous communities use traditional agricultural knowledge and practices, formerly or currently used, to contribute to climate resilience?
- ① What policy and regulatory frameworks support or hinder the adoption of agroecological practices?
- ① What are the main barriers and opportunities for women peasants, youth, and Indigenous communities to adopt agroecological practices?
- ① How can advocacy strategies be tailored to engage policymakers and other stakeholders in promoting agroecology and climate-resilient food systems?
- ① What are the social, economic, and environmental benefits of agroecological practices?

Regional

Lead organization: Focus on the Global South

Agroecology and Climate Justice: Strengthening Social Movement Collaborations in Asia

Objectives

- Strengthen capacities of the partner organizations in target countries to produce empirical evidence through a scientific approach on the multifunctional benefits of agroecology
- Build the capacities of movement partners in developing concrete proposals to surmount the barriers to agroecological transformation;
- Develop a framework on the importance of agroecology and climate resilience rooted in the realities and needs of small-scale food providers
- Ensure the effective intervention of peasant movements and civil society organizations in key national, regional, and international advocacy spaces



Research questions

- ✓ How does agroecology address climate change, food insecurity, and inequality?
- ✓ What barriers do peasant communities face in transitioning to agroecological systems?
- ✓ What strategies and policies are needed to overcome these barriers and support community resilience?

Participatory methods

- **Community-Based Participatory Research (CBPR)** – Collaborative data gathering and analysis with community researchers.
- **Communications & Public Engagement** – Case studies, photo essays, webinars, podcasts, infographics.
- **Multi-stakeholder Policy Dialogues** – Engagement at local, national, regional, and international levels.
- **Advocacy Actions** – Targeted campaigns in national and regional policy arenas, UNDROP, and COP 30.
- **South-South Learning Exchanges** – Knowledge sharing among countries and communities.

Desired changes

- ✓ Strengthen national and regional policies that recognize agroecology as a viable, climate-resilient food system model
- ✓ Influence sustainable agriculture policies (e.g., Organic Agriculture Act, National Agricultural Development Policy, and Action Plans)
- ✓ Advocate for public investment in AE support services, and resist corporate-led agricultural models

Members of the partnership

- Southern Peasants' Federation of Thailand (SPFT)
- All India Peoples Science Network (AIPSN)
- Paragos-Pilipinas
- Social Action for Community Development (SACD)
- Serikat Petani Indonesia (SPI)

France

Lead organization: Confédération Paysanne

Survey on Water Resource Management on Smallholder Farms to Strengthen Advocacy on The Sharing of Commons

Objectives

- Establish a participatory research process with farmers in the network, based on the experiences and expertise of the farms in our networks.
- Support, consolidate, and illustrate the Confédération Paysanne's demands and advocacy on water issues with quantitative and qualitative data.
- Communicate the results of this survey: A comprehensive report, a short summary, an oral presentation, and a set of four short videos.



Research questions

- ✓ What are the interactions between farmers and water in French regions?
- ✓ What are farmers' perceptions and strategies regarding access to water, quality, and availability?
- ✓ What water management and irrigation practices promote climate change adaptation and resilience?
- ✓ How do agroecological practices influence water use efficiency compared to conventional farms?

Participatory methods

- The farmers' working group participates in the design of survey tools.
- Survey protocol and questionnaire – Distributed through the network; tested and refined by farmers.
- Workshops and farm visits – Collection of qualitative testimonials and case studies.
- Data analysis – Statistical and discursive analysis of practices and perceptions.
- Communication outputs – Reports, summary brochure, updated diagnostic tools, and four short videos.
- Advocacy presentations – Results shared with national and regional policy makers.

Desired changes

- ✓ Reform of drought decrees to reflect agroecological realities.
- ✓ Integration of the needs of small farms into regional water planning: Water Development and Management Master Plans (SDAGE) and Territorial Water Management Projects (PTGE).
- ✓ Increased support for equitable water distribution and collective management of common goods.
- ✓ Strengthening the voice of farmers within OUGCs (Agricultural Water Governance Organizations).



Members of the partnership

- Fédération Associative pour le Développement de l'Emploi Agricole et Rural (FADEAR), France.
- Gilles Belaud, Institut Agro Montpellier, INRAE, France.
- Intern student, Master's program in Water, AgroParisTech, Institut Agro Montpellier, University of Montpellier.

**Regional****Lead organization: European Coordination Via Campesina (ECVC)****Shaping a Common Agricultural Policy for Agroecology through Participatory Action Research****Collaborative Members**

- Friends of the Earth Europe (FoEE)
- Université libre de Bruxelles (ULB)

Research Questions

- ❓ What regulatory principles should underpin the proposals for the next CAP reform in the EU to support the uptake of agroecology in European farming?

Subquestions: _____

- ❓ What concrete policy instruments and incentives, especially within market regulations, could support the spread of agroecology across the farming community?

- ❓ Which ongoing regulatory proposals - especially those linked to digitalisation and market-based solutions such as carbon farming and nature credits- risk constraining or undermining agroecological practices, and in what ways?

- ❓ Based on the insights of the answers to subquestions 1 & 2, what regulatory principles can be defined that enable or hinder the agroecological transition?

Closing Reflection

Together, these posters of the 43 research initiatives reflect the diversity, and transformative potential of Participatory Action Research in advancing agroecology as a climate solution. Rooted in local realities and driven collectively by communities, grassroots organizations, academic institutions and research centers, they demonstrate how knowledge co-creation can inform advocacy processes for agroecological food systems.

We invite you to stay engaged as this body of work grows. You can follow ongoing developments, emerging findings, and stories from the field through the [IPA-Global section](#) of our website. We also encourage you to connect with us through our social media channels and AEF monthly newsletter, where we regularly share updates, reflections, and opportunities to learn from the IPA-Global community. The journey of these initiatives is still unfolding—and we look forward to continuing to share their progress and impact with you.

Stay connected:

- **LinkedIn:** [Agroecology Fund](#)
- **Instagram:** [@agroecology_fund](#)
- **Website:** [agroecologyfund.org](#)

